

**Freshman Music Theory  
Advanced Placement Exam**

Name: \_\_\_\_\_

1. Name the pitches:

The first staff is in treble clef and contains five notes: G4, A4, B4, C5, and D5. The second staff is in bass clef and contains five notes: E3, F3, G3, A3, and B3. The third staff is in alto clef (C-clef on the third line) and contains five notes: C4, D4, E4, F4, and G4. The fourth staff is in tenor clef (C-clef on the fourth line) and contains five notes: A3, B3, C4, D4, and E4.

2. Write the key signatures for the given keys:

A single musical staff with five empty staves, each with a different clef: treble, bass, alto, tenor, and bass.

F# Minor

B<sup>b</sup> Major

C Minor

F# Major

B<sup>b</sup> Minor

3. Write the following scales:

A musical staff with a bass clef, divided into two sections for writing scales.

E Major (ascending)

Relative minor of E Major – Natural (ascending)

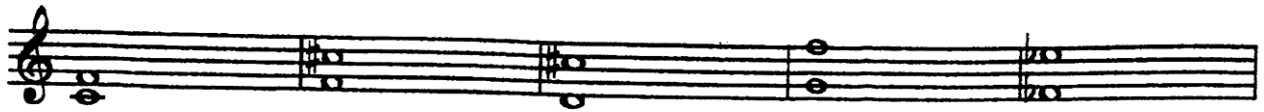
A musical staff with a treble clef, divided into two sections for writing scales.

Parallel minor of E Major – Harmonic (ascending)      Relative minor of F Major – Harmonic (ascending)

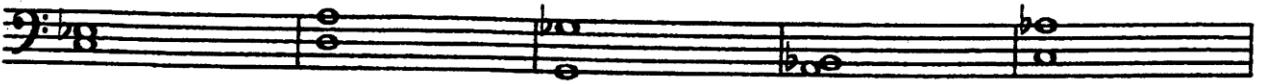
A musical staff with a bass clef, divided into two sections for writing scales.

Parallel minor of F Major – Melodic (ascending and descending)

4. Name the following intervals. Provide the number and quality of each interval:



\_\_\_\_\_

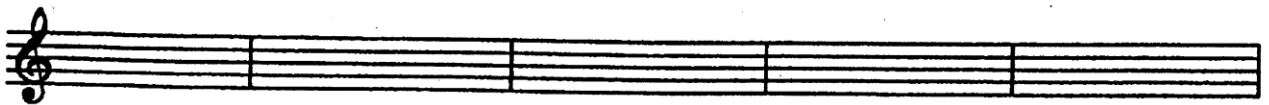


\_\_\_\_\_

5. Notate the enharmonic equivalent next to each example:



6. Notate the following chords according to the chord symbols:



BM

E<sup>b</sup>m

vii<sup>o</sup> in A Major

III<sup>+</sup> in D Minor

V<sub>6</sub> in C Minor

7. Analyze the following chords in Roman numerals and indicate inversions.

Label the circled nonharmonic tones and identify the cadence type of each example:



CM:

F#m:

E<sup>b</sup>M:

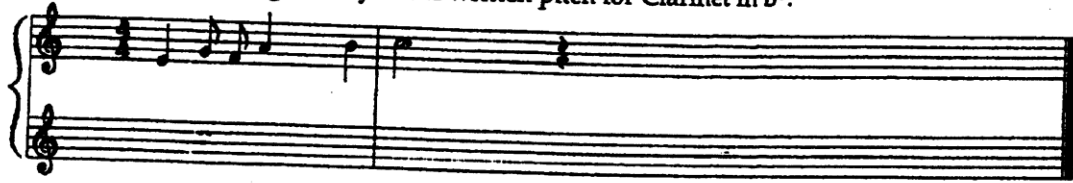
AM:

B<sup>b</sup>m:

Cadence:

\_\_\_\_\_

8. Transpose the following melody to the written pitch for Clarinet in B<sup>b</sup>:



9. Define the following terms:

Motive:

Phrase:

Sequence:

Parallel Period:

Homophonic texture:

Polyphonic texture:

**PART II**

10. Analyze the chords in Roman numerals and complete the upper voices according to the figured bass. Consider voice leading, spacing, and ranges when you fill in the voices.

Modulation occurs in this example. Identify which type of modulation is used in this example:

\_\_\_\_\_ Modulation

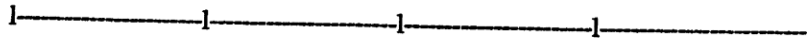


GM:

Cadence: \_\_\_\_\_

11. Analyze the following excerpt by answering the following questions.

- a. This excerpt is in the key of \_\_\_\_\_.
- b. Half cadences occur at m. \_\_\_\_\_ and m. \_\_\_\_\_.
- c. Perfect authentic cadences occur at m. \_\_\_\_\_ and m. \_\_\_\_\_.
- d. A parallel period occurs at mm. \_\_\_\_\_ - \_\_\_\_\_.
- e. A contrasting period occurs at mm. \_\_\_\_\_ - \_\_\_\_\_.
- f. A phrase extension (cadential extension) occurs at mm. \_\_\_\_\_ - \_\_\_\_\_.
- g. The texture of mm. 9-10 is called \_\_\_\_\_.
- h. Analyze the harmony at mm. 9-12 in Roman numerals and write the harmonic rhythm of mm. 9-12.



W. A. Mozart: Piano Sonata, K. 331, I, mm. 1-18

**Andante grazioso**

